

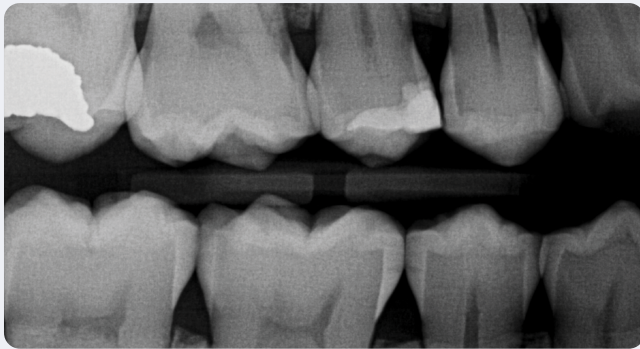
# Welcome to Overjet



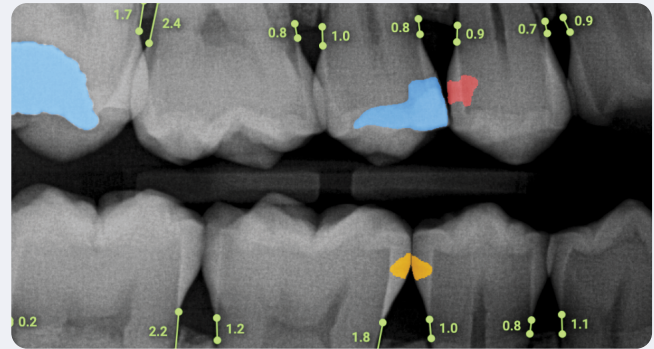
## WHAT IS OVERJET?

Overjet is an FDA-cleared artificial intelligence platform that automatically analyzes patient x-rays in real-time, adding data to aid in clinical decision-making and patient case acceptance.

Traditional X-ray



X-ray with Overjet



### Real-Time X-ray Analysis

Within a minute, have more data than ever to guide and support your diagnosis.

### Daily Patients Dashboard

Make your morning huddle more effective with AI-analysis of same-day treatment opportunities.

### Develop New Associates

Increase the confidence of new providers when AI supports their clinical decisions.

### 18-Month Chart Review

Discover undiagnosed restorative and periodontal treatment opportunities in your database.

### Consistency & Standardization in Care

Standardize quality of care benchmarks and protocols across multiple providers and locations.

### Increase Insurance Claim Approvals

Submit claims with greater confidence when the diagnosis is supported by quantified data.

## HOW OVERJET BENEFITS PATIENTS



### See What Your Provider Sees:

AI makes it easier to visualize the areas of concern so patients can make a more informed decision.



### Confidence in Diagnosis:

Patients are more likely to say yes to treatment when they trust the diagnosis. Doctors can point to the objective AI findings to substantiate their diagnosis.



### Fewer Insurance Claim Rejections:

Insurance carriers are more likely to accept Overjet's quantified findings, reducing the chance the claim will be rejected.

## Morning Huddle

Review the Daily Patients Dashboard to identify:

- Patients who are missing bitewings or perio charts
- Patients who are potential SRP patients
- Patients with AI findings that have not been treatment planned

## Exam Room

Pull up Overjet results for the doctor to review before showing to the patient. Some practices then show the Overjet x-rays to the patient with the findings turned off, and say they're looking for anything that comes up red or orange as they review the findings together.



## Suggested Verbiage

### Introduction:

We're going to review the findings of your x-rays using Overjet, an FDA-cleared artificial intelligence software. This shows us accurate measurements of your bone levels as well as any decay. Our goal is to help you keep your natural teeth for life, and this helps us do that.

### Bone Loss:

This is showing us that you have 3 millimeters of bone loss. The longer that bacteria stays on the tooth and gums, the more it eats away at the bone, causing bone loss. The bone is holding the tooth in place. If the bacteria is left untreated, this number will keep going up, and you may get to a point where we must extract the tooth because there is not enough bone left to hold it in place.

### Cavities:

These red marks are areas of decay. It's red because it has gone into the dentin, which is the inner layer of the tooth. These are cavities that must be addressed immediately to avoid further damage to the tooth. The orange marks are also cavities, but they are still on the outer layer of the tooth.

### Crowns:

This DMF number here means Decayed-Missing-Filled. You can see that it's over 50%. There isn't enough tooth left to do a filling, so the best option to protect the tooth is a crown.

## Questions?

Contact [practicesupport@overjet.ai](mailto:practicesupport@overjet.ai) or use the Help widget within the Overjet platform.